

Card size Digital Photo Printer

# Color Stream CS2-c



## Best for Amusement & Advertisement Photo printing!

### Unique application of Compact Photo Printer

#### Superior Image Quality

The print quality is excellent without smear by utilizing an unique thermal control technology. High quality matte finish is also available.

#### More Ecological

Maximum AMP draw is 3.1A.  
Low waste, and jam free.

#### Unique application

The card size print is useful for the various fields such as Theme park, Business card, ID photo etc.

#### Light weight and most compact

World lightest weight less than 10kg and most compact size design are achieved.

### Card size print becomes popular in various fields.



Business card



Theme park photo



ID photo



Security pass



Advertisement



Trading card



Ticket



# SINFONIA PHOTO

www.sinfoniaphoto.com

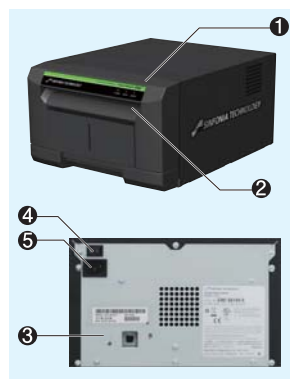
Card size Digital Photo Printer

# Color Stream CS2-c

The compact design enables  
to carry it anywhere and use it anyway.

従来機の 1/2 の大きさで、様々な場所での運用を実現します。

Weight  
**10kg**



- ① LCD
- ② Paper ejection slot
- ③ USB connector
- ④ Power switch
- ⑤ AC inlet

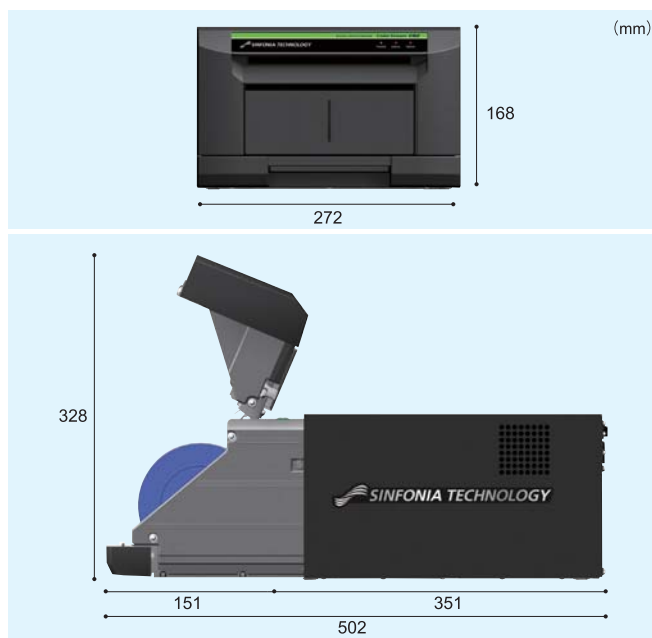


## Specifications

Model No.	CHC-S6145-5A
Print Method	Dye Sublimation Thermal Transfer
Resolution	300dpi
Paper Size Capacity	450 prints : 89mm×60mm
Paper Sending Size Variable	89mm×55, 56, 57, 58, 59, 60mm
Print Speed	11 seconds or less : Standard mode 14 seconds or less : Fine mode
Ink Ribbon / Paper	YMC+OP / Roll Paper
Dimensions	272 (W) × 168 (H) × 351 (D) mm
Weight	10Kg or less
Power Supply	AC100-240V , 50 / 60Hz Auto-switching
Power Consumption	3.1A- 1.3A
Interface	USB 2.0
Buffer Memory	32MB
Safety Standards	UL , cUL , CE
EMI	FCC ClassA , VCCI ClassA
Printer driver	Windows XP / Vista / 7 (32bit / 64bit)
Software Development Kit	DLL (Windows XP / Vista / 7)

The above specifications are subject to change without notice.  
Windows and Windows Vista are either registered trademarks or trademarks  
of Microsoft Corporation in the United States and/or other countries.

## Dimensions



### CAUTION!

- Before use, read the instruction manual carefully to ensure safe operation.
- Do not position in wet, humid, dusty or smoky environments. This may result fire, breakdown or electric shock.

Formerly SHINKO ELECTRIC CO., LTD.

 **SINFONIA PHOTO**

[www.sinfoniaphoto.com](http://www.sinfoniaphoto.com)

100 Randolph Road, Somerset, New Jersey 08873 (Phone) 732-271-7369

Email U.S.: [sales@sinfoniaphoto.com](mailto:sales@sinfoniaphoto.com)