

ADERA SPOTON

SMART THERMAL SCANNER

SPOTON is a long-wave infrared (LWIR) module integrated with an RGB camera, using advanced Artificial Intelligence (AI) developed by GovTech to conduct face detection with temperature sensing for crowds, indicated on a monitor. This compact and affordable mobile device can be easily deployed both indoors and outdoors, keeping your visitors and facilities safe while facilitating crowds.



Automate your temperature sensing in a hygienic and efficient way, with no backend infrastructure required.

Features



SMART

The AI algorithm only recognizes human faces and not is affected by hot or cold objects



EASY SETUP

Simple link up to a monitor with temperature indication using colour codes



FAST & ACCURATE

Screens up to 10 faces at once with instant temperature sensing



SAFE & HEALTHY

No more physical contact with manual scanning



MOBILE

Compact and light for indoors and outdoors deployment



AFFORDABLE

With no infrastructure required, conduct mass temperature screens the efficient yet affordable way



USER FRIENDLY

Easy to understand with colour indication normal temperature, high temperature and no mask alerts

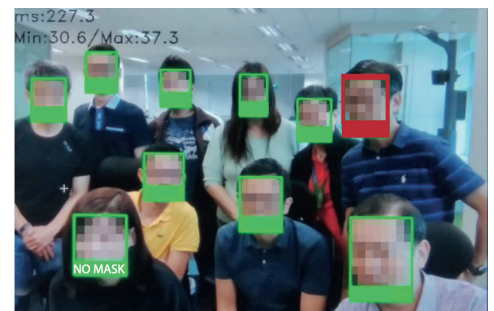


AUTOMATED & CONVENIENT

Automated alerts to the operator if high temperatures detected, no need for manual monitoring

Applications

- ✓ Alert on high temperature detection by email
- ✓ Facial detection, does not recognise hot or cold objects
- ✓ Ability to sense temperature of individuals with masks or headdress
- ✓ Colour indication for efficient monitoring
- ✓ Ability to create image snapshot and save it to a local folder
- ✓ Real-time image processing powered by AI



ADERA SPOTON

SMART THERMAL SCANNER

Easy Set-up

- 1 Standalone SPOTON device mounted on a laptop/tripod facing the passageway (Recommended measuring distance - within 2 meters)
- 2 Connect the laptop to the RealSense (RGB) Camera using a type C USB cable and to the LWIR Camera with a micro USB cable
- 3 Launch DetectFever.exe on the laptop



Specifications

Device Measurement	90mm x 85mm x 30mm
LWIR Sensor wavelength	8 to 14 μ m
Thermal Arrays	160 x 120 active pixels
Frame Rate	< 9Hz
Accuracy	$\pm 0.3 - 0.5$ °C within 2 meter range

Hardware Recommendation

Laptop	Min. Intel i5, USB 3.1 port
Tripod	Optional
TV	Optional (Highly recommended to display live video)

Software developed & licensed by



Product features, specifications and appearances are subject to change without notice.
Copyright © 2021 All ID Asia - All rights reserved

Singapore (HQ)
All ID Asia Pte Ltd
+65-6778-0075
enquiry@allid.com.sg
www.allid.com.sg

Malaysia
All ID Asia Sdn Bhd
+603-8075-1888
enquiry@allid.com.my
www.allid.com.my

Indonesia
PT All ID Indonesia
+62 21-4517-330
enquiry@allid.co.id
www.allid.co.id

Myanmar
All ID Myanmar
+951-652265
enquiry@allid.com.mm
www.allid.com.mm

Philippines
All ID Philippines
+632 224 2042
enquiry@allid.com.ph
www.allid.com.ph